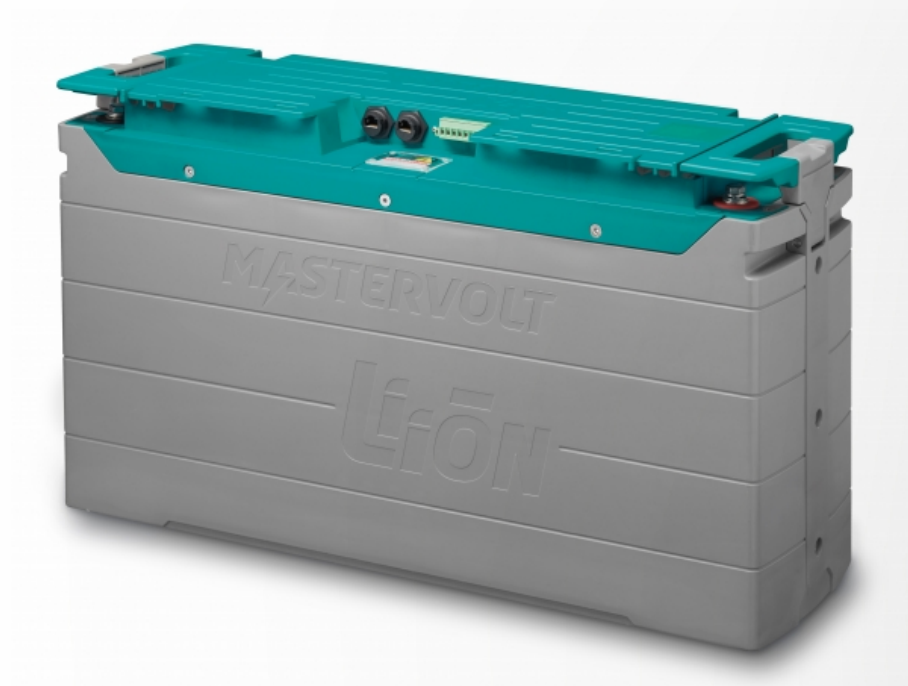


# MLI Ultra 12/5500



Product code: 66015500

This product is no longer available.

New upgraded version, the [MLI Ultra 12/6000](#) MLI Ultra 12/6000, will be available in April 2022.

## Heavy Duty, Extreme Performance

The MLI series delivers extreme Lithium Ion performance even under the harshest conditions, such as high charge and discharge currents, wet environments, mechanical shocks or vibrations. This is realized by combining our best Lithium-Iron Phosphate (LiFePO4) cells with a proprietary Battery Management System (BMS) inside a sturdy, waterproof housing.

The sophisticated Mastervolt BMS ensures optimal use of each individual cell. Integrated battery monitoring provides you with accurate and up-to-date information on the state of your battery. Integrated NMEA 2000, CZone or MasterBus communication allows complete system integration, to ensure the best possible recharging, while maximizing the lifetime of your battery.

## Self-learning balancing algorithm

The MLI Ultra batteries are equipped with a self-learning balancing algorithm that predicts the behavior of each individual battery cell and balances proactively, resulting in a faster and more efficient charge cycle. The self-learning system eliminates unnecessary stress on the cells, resulting in an even longer Battery Cycle Life.

## Features

- Extreme performance, heavy duty Lithium Ion batteries.
- BMS and LiFePO4 chemistry according to highest safety standards.
- Saves up to 70 % in space and weight.
- More than three times the life span of traditional batteries.
- Fast charging within 60 minutes.
- Self-learning balancing algorithm for optimized performance and longer battery lifetime.
- High charge / discharge rate up to 2.5 C.
- Integrated battery monitoring (Ah consumed, state of charge).
- Series connection up to 10 batteries possible.
- MasterBus communication with any Mastervolt battery charger.
- CZone and NMEA 2000 compatible.
- Waterproof electronics compartment.
- Designed according to UN38.3.
- CE, E-Mark certified, DNV-GL pending.
- Compliant to UL1973 and RVIA standards, TEI listed.

### CAUTION!

For additional safety, Mastervolt stipulates the use of a safety relay as mandatory part of the battery installation.

- safety relay 12 volt, product code [7700B-BSS](#) 7700B-BSS

# Specifications

## General specifications

Nominal battery voltage	13.2 V
Nominal battery capacity	400 Ah
Nominal battery energy capacity	5500
Cycle life	3500 cycles at 80 % DOD at 25 0C, max. C3 charge and C2 discharge
Max. charge current	400 A
Recommended charge current	<= 120 A
Max. continuous discharge current	500 A
Maximum continuous charge current	200 A
Peak discharge current	1800 A (10 sec.)
Battery monitoring	integrated
MasterBus communication	yes
CZone / NMEA 2000 communication	yes
Terminals	M8
Mounting position	upright (recommended) or either long side
Max. outer dimensions (incl. terminals/grip handles), l x w x h	622 x 197 x 355 mm 24.5 x 7.8 x 14.0 inch
Product weight	55 kg 121.3 lb
Shipping weight	60 kg 132.3 lb
Compliance	CE, E-Mark / RVIA Compliant / DNV-GL pending

## Technical specifications

Battery chemistry	Lithium Iron Phosphate
Protection degree	IP65 (electronics cabinet)
Parallel connection	yes, unlimited
Series connection	yes, up to 10 batteries - systems over 48 V require a separate battery box to prevent access to high voltage parts
Protections	over voltage, under voltage, over temperature
Safety relay	to be added mandatorily, product code 7700B-BSS
Safety relay controls	integrated