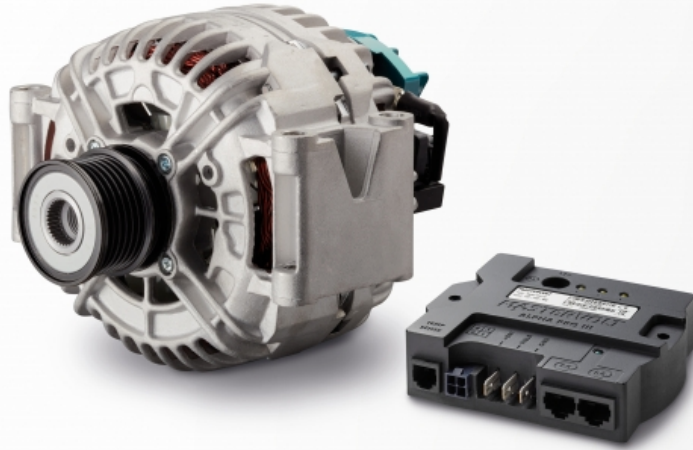


# Alpha Compact 14/200



Product code: 46614200

Alpha Compact alternators are optimized to deliver continuous high power output in energy storage applications. Combined with our Alpha Pro regulators, they create a high performance, plug-and-play charging solution. This combination is suitable for all battery types, including Lithium Ion.

These automotive style alternators offer many advantages. Most manufacturers offer a second alternator option, better known as PTO or Power Take Off option. This provides a straight-forward way to add an Alpha Compact as a second alternator. Alternatively, the stock alternator can be replaced with an Alpha Compact to obtain a powerful, MasterBus enabled 3-step charger.

## High performance plug & play alternators

Compared to conventional alternators, Alpha Compact offers lower weight, smaller dimensions and reduced fuel consumption. This is made possible by its open construction with double internal fans. An integrated temperature sensor controls the operating temperature.

## Models

The Alpha Compact series consists of 7 models in 12 V and 24 V. The models with suffix &ldquo;VP&rdquo; are a perfect fit for Volvo Penta engines. Finding the right alternator for a specific application can be challenging. Please feel free to contact Mastervolt for assistance, we are happy to help you.

## Accessories

The Alpha Compact 14/200 and Alpha Compact VP models are fitted with a multi-groove pulley as standard. Other Alpha Compact models come without pulley. Mastervolt offers a complete range of multi-groove pulleys.

## Applications

Worldwide use in marine, mobile, infrastructure and industrial applications.

## Features

- Plug and play solution, with Alpha Pro III regulator included.
- Suitable for high ambient temperatures.
- Patented magnetic design.
- Up to 40 % lighter and 25 % more compact than conventional alternators.
- Up to 30 % lower fuel consumption.
- High charge current at idle RPM.
- Cable and electronics protected against oil, moisture and dirt.
- Wide range of accessories available.
- Original Equipment quality with full 2 year warranty.

# Specifications

## General specifications

Charge regulation	an Alpha Pro III charge regulator comes standard with all models
Isolated operation	yes, with optional isolation bushings
Rotational direction	clockwise
Galvanic isolation	non-isolated
Cooling	integrated dual fan
Mounting	direct mounting
Pulley included	yes
Weight	7.5 kg 16.5 lb

## Technical specifications

System voltage	12 V
Nominal current (at 6000 rpm, 25 °C)	200 A
Charge current (at 1800 rpm, 25 °C)	106 A
Cut-in speed	1350 rpm
Max. rotational speed	20.000 rpm
Power Take Off (kW / hp)	5.6 / 7.6
Max. operating temperature	120 °C 248 °F
Connections	positive output stud = 2x M8; W (rpm) signal connection = isolated fast-on; field current connection = Mastervolt plug
Temperature sensor	integrated, RJ12 connection